



## GAUGE SERIE 6200

**APPLICATION :** The 6200 series gauges are widely used to indicate liquid levels of fuels, hydraulic fluids, lube oils, liquified gases such as propane, butane, ammonia etc...

The 6200 series gauges are used for tank diameter up to 2000mm and tank pressure up to 25 bar. Float is counterbalanced for low specific gravity fluids. Gauge can be equipped with direct reading dial, twinsite or switch.

### STANDARD MATERIAL OF CONSTRUCTION :

- Head: aluminium
- Gear housing: plastic
- Centershaft, support tube, float rod: aluminium
- Gears, cross stud, bearings: stainless steel
- Drive magnet: alnico
- Float: nitrile rubber
- Gasket: buna-n
- Counterweight: lead

**OPTIONS:** Head : junior brass head: prefix B

Float : nirophil float (3 bar max. press.)prefix C  
aluminium

stainless steel float prefix A

Gear housing : aluminium

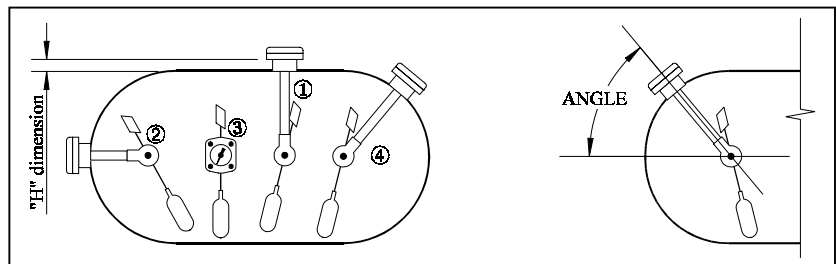
Plastic or Metal cover for head



### MOUNTING POSITION :

Gauges of serie 6200 can be manufactured for any mounting position.

- Vertical : top mounted 1
- Horizontal : end mounted 2
- Horizontal : side mounted 3
- Angle : angle mounted 4



(angle for angle mounted gauge is specified from horizontal, positive above horizontal, negative below horizontal)

### CERTIFICATION :

Those gauges serie 6200 are in accordance with European Directive PED 97/23/CE for LPG, ammonia for maximum pressure 25 bar and temperature  $-20^{\circ}$  to  $+60^{\circ}\text{C}$   
Others: on request after risk analysis.

They have been certified by APRAGAZ, notified body 0029, under n° 02/BE/329

Subject to change without notice

1/03

**ROCHESTER GAUGES INTERNATIONAL S.A.**

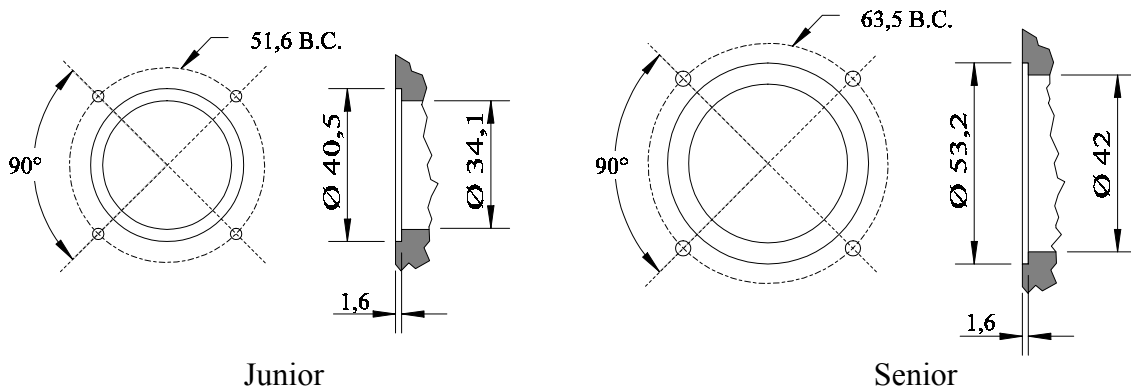
Z.I. WAVRE NORD - Av. Lavoisier, 6 - 1300 WAVRE (Belgium)

Tél. (010) 24.10.10 - Fax (010) 22.81.39

**MOUNTING :**

**Junior:** (4) screws 1/4"-28\*7/8" or M6/25 mm on 51.6 mm bolt circle.

**Senior:** (4) screws 5/16"-24\*7/8" or M8/25 mm on 63.5 mm bolt circle.



| MODEL NUMBER | MOUNTING        | GAUGE TYPE | DIAL TYPE  |
|--------------|-----------------|------------|--|
| 6240         | TOP             | SENIOR     | TWINSITE : refer to twinsite section for model available |
| 6241         | TOP             | JUNIOR     |  |
| 6243         | HORIZ. OR ANGLE | SENIOR     |  |
| 6244         | HORIZ. OR ANGLE | JUNIOR     |  |
| 6250         | TOP             | SENIOR     | SWITCH : refer to switch section for model available     |
| 6251         | TOP             | JUNIOR     |  |
| 6253         | HORIZ. OR ANGLE | SENIOR     |  |
| 6254         | HORIZ. OR ANGLE | JUNIOR     |  |
| 6260         | TOP             | SENIOR     | Side reading   |
| 6280         | TOP             | SENIOR     | 50 mm dial   |
| 6281         | TOP             | JUNIOR     | 40 mm dial   |
| 6283         | HORIZ. OR ANGLE | SENIOR     | 50 mm dial   |
| 6284         | HORIZ. OR ANGLE | JUNIOR     | 40 mm dial   |
| 6290         | TOP             | SENIOR     | 100 mm dial  |
| 6293         | HORIZ. OR ANGLE | SENIOR     | 100 mm dial (**)   |

(\*\*) refer to dial section.

**ORDERING INFORMATION:**

A. For cylindrical horizontal tank specify:

- gauge model number
- liquid to be gauged with its density, tank design pressure
- working pressure and temperature
- mounting position
- riser dimension (distance between gauge gasket seat and tank wall)
- outside and inside diameter
- shape of dished end for end mounting gauge
- tank drawing is required for gauge angle mounted on dished end of tank

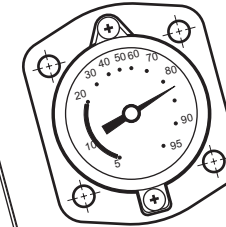
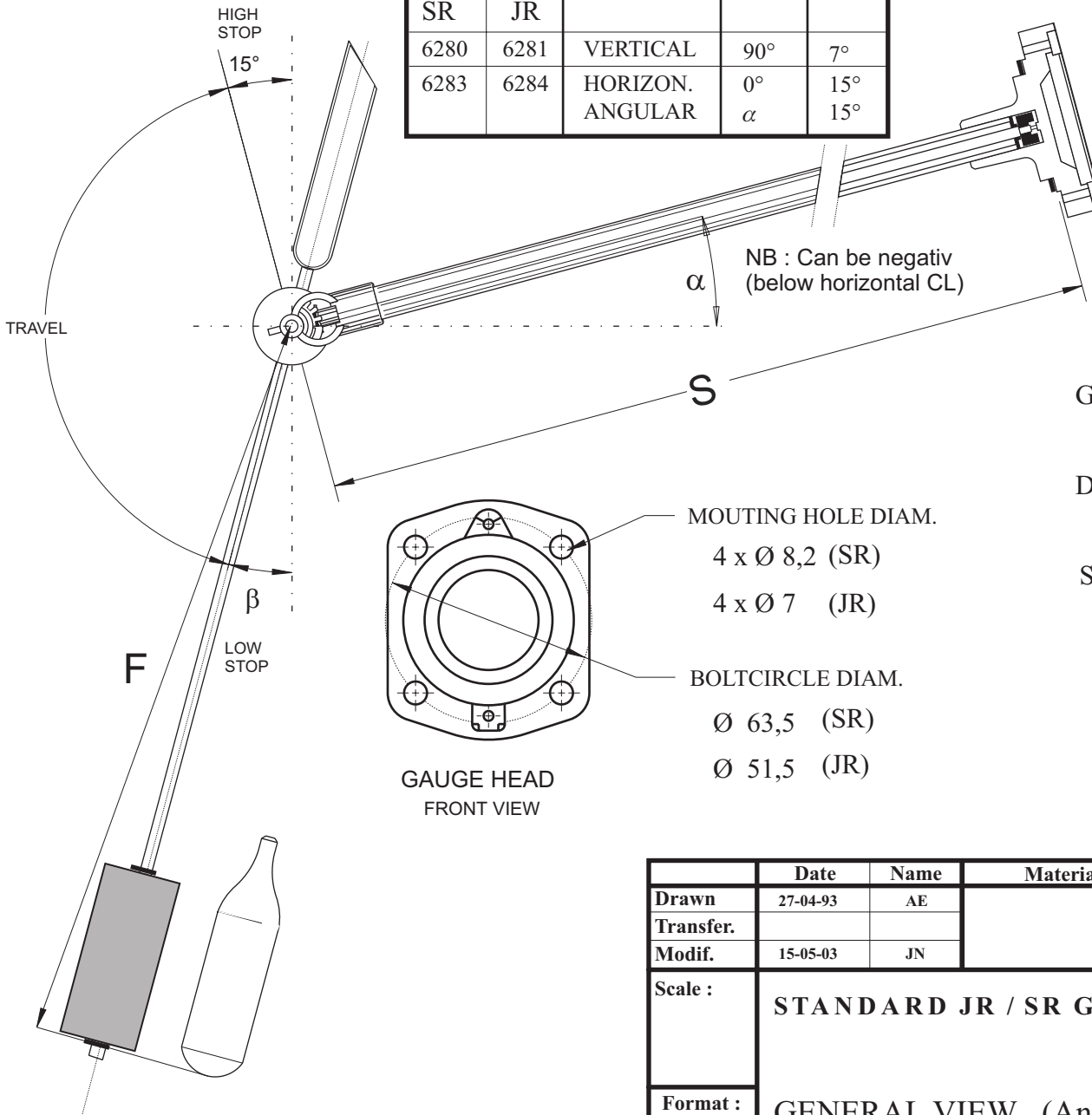
B. For vertical cylindrical tank specify:

- same information as in A
- dimension of cylindrical part and dimension of dished ends
- position of gauge from bottom of tank for side mounted gauge; position of gauge from vertical centerline of tank for top mounted gauge
- total tank content
- portion of tank to be gauged

C. For non cylindrical tank specify:

- same information as in A
- tank drawing

| TYPE |      | MOUNT.              | $\alpha$       | $\beta$    |
|------|------|---------------------|----------------|------------|
| SR   | JR   |                     |                |            |
| 6280 | 6281 | VERTICAL            | 90°            | 7°         |
| 6283 | 6284 | HORIZON.<br>ANGULAR | 0°<br>$\alpha$ | 15°<br>15° |



VARIABLE DIMENSIONS  
AS REQUIRED

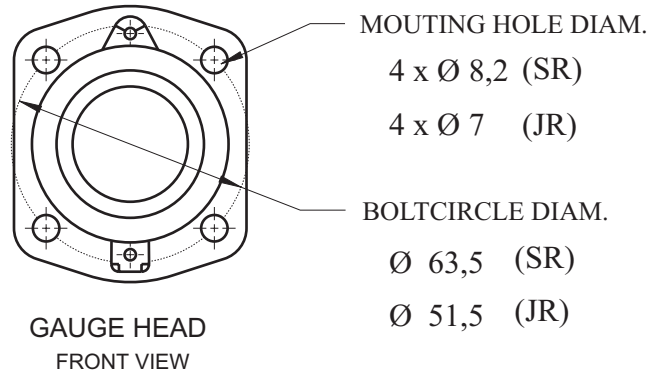
S = STEM


F = FLOAT ARM

$\alpha$  = ANGLE TO HORIZONTAL  
CENTER LINE

### Gauge Materials

- Head : Aluminium or Brass
- Gear Housing : Acetal or Aluminium
- Float : Nitrile Rubber or Aluminium
- Gasket : Buna"N" or Neoprene
- Drive Magnet : Alnico
- Gear : Stainless Steel
- Shaft : Aluminium
- Support Tube : Aluminium
- Float rod : Aluminium
- C' balance : Lead

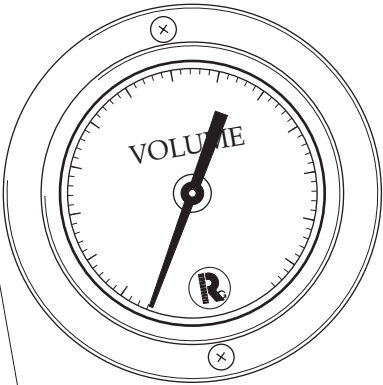
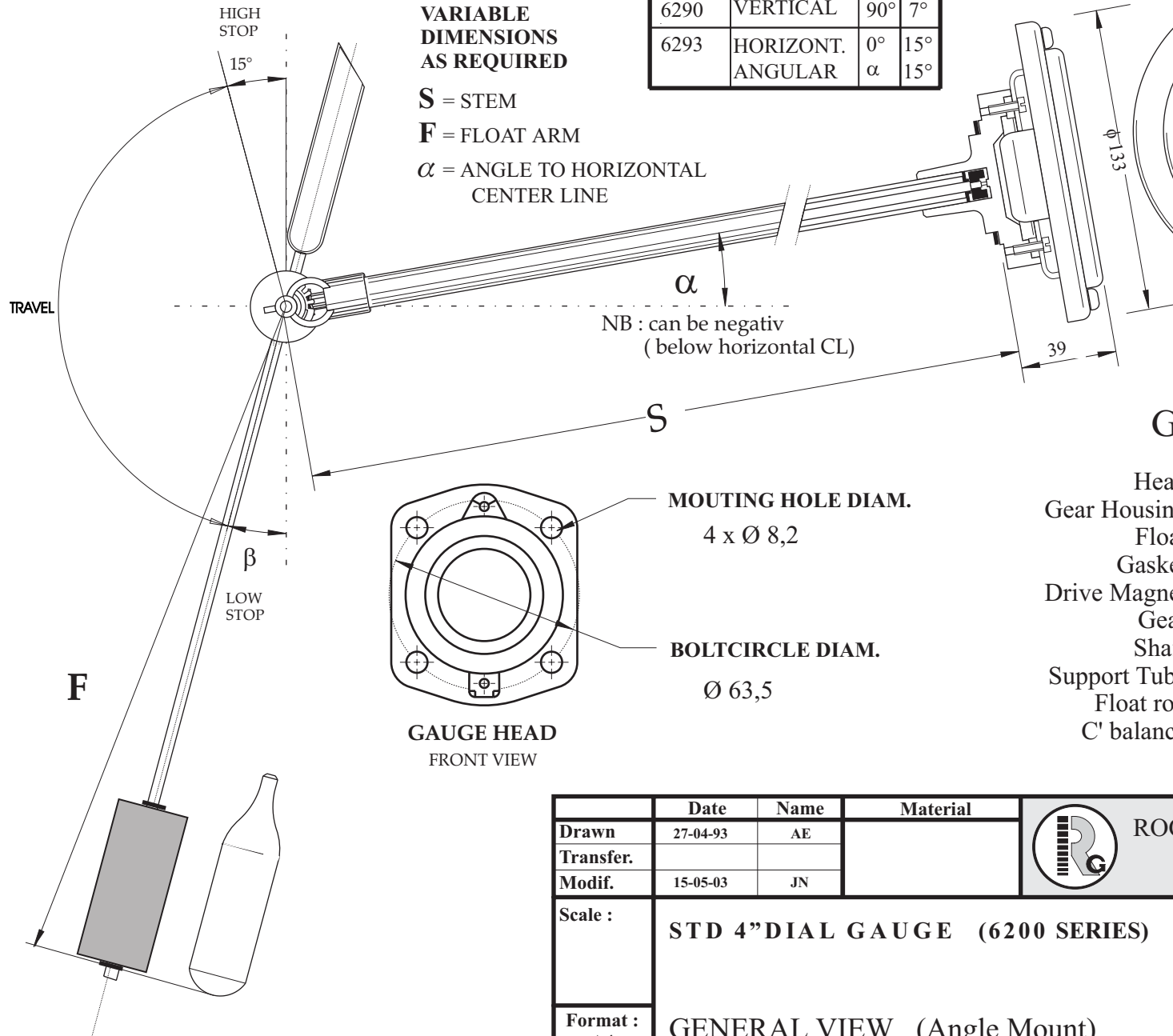


|                | Date                       | Name | Material |  ROCHESTER GAUGES INT. S.A.<br>BELGIUM |
|----------------|----------------------------|------|----------|---|
| Drawn          | 27-04-93                   | AE   |          |   |
| Transfer.      |                            |      |          |   |
| Modif.         | 15-05-03                   | JN   |          |   |
| Scale :        | STANDARD JR / SR GAUGE     |      |          | Computer file :   |
| Format :<br>A4 | GENERAL VIEW (Angle Mount) |      |          | 6200S00000<br>C   |

| TYPE | MOUNT.               | $\alpha$       | $\beta$    |
|------|----------------------|----------------|------------|
| 6290 | VERTICAL             | 90°            | 7°         |
| 6293 | HORIZONT.<br>ANGULAR | 0°<br>$\alpha$ | 15°<br>15° |

**VARIABLE DIMENSIONS AS REQUIRED**


**S** = STEM  
**F** = FLOAT ARM  
 $\alpha$  = ANGLE TO HORIZONTAL CENTER LINE



**Gauge Materials**

- Head : Aluminium or Brass
- Gear Housing : Acetal or Aluminium
- Float : Nitrile Rubber or Aluminium
- Gasket : Buna"N" or Neoprene
- Drive Magnet : Alnico
- Gear : Stainless Steel
- Shaft : Aluminium
- Support Tube : Aluminium
- Float rod : Aluminium
- C' balance : Lead

**GAUGE HEAD FRONT VIEW**

|                | Date                            | Name | Material |  <b>ROCHESTER GAUGES INT. S.A.</b><br>BELGIUM |
|----------------|---------------------------------|------|----------|--|
| Drawn          | 27-04-93                        | AE   |          |  |
| Transfer.      |                                 |      |          |  |
| Modif.         | 15-05-03                        | JN   |          | Computer file :  |
| Scale :        | STD 4" DIAL GAUGE (6200 SERIES) |      |          | <b>629*S00000</b>  |
| Format :<br>A4 | GENERAL VIEW (Angle Mount)      |      |          |  |

C